

Midnight
HOTEL

AUTOGRAPH COLLECTION®
HOTELS

Welcome	04
Rooms & Suites	06
Drink & Dine	16
Meetings & Events	24
Wellness	30
Neighbourhood	34
Partnerships	36
Loyalty	37



Welcome

A lifestyle you won't want to leave.

Designed by acclaimed architects Fender Katsalidis, and part of Marriott International's Autograph Collection, Midnight Hotel presents 199 premium guest rooms, on-site restaurant and bar, indoor pool, gym, sauna, and meeting and event spaces.

A reflection of our neighbourhood, we invite you to discover the beat of a growing city, celebrate creative originality and cultural authenticity, and above all, experience exceptional service in an exceptional setting.





Rooms & Suites

Midnight Hotel rooms and suites offer guests the ultimate inner-city space to connect with the capital.

Each room has been designed with guest experience in mind. From bespoke commissioned artwork, premium furnishings to luxe bathroom amenities and seamless connectivity, room inclusions have been thoughtfully applied to maximise guest comfort and convenience.



Room Inclusions

- 4K HD Smart TV
- Atrium views
- Bespoke René Linssen M bottle opener
- Bespoke Thomas Bucich artwork
- Complimentary mini bar
- Daily housekeeping service
- Espresso machine
- Hairdryer
- Hunter LAB bathroom amenities
- In-room safe
- Iron and ironing board
- Midnight bathrobe and slippers
- Nested table and seating
- Plush king bed
- Premium bed linen
- STAYCAST by Google Chromecast in-room entertainment
- Underground parking (rates apply)
- Unlimited highspeed Wi-Fi
- Valet parking (rates apply)
- Vittoria coffee
- Walk-in rain shower
- Limited interconnecting rooms available

Junior Suite*

- Bathtub
- Lounge with sofa bed
- Separate table and chairs

Lume Suite*

- Bathtub
- Double vanity
- Powder room
- Separate lounge and dining area



Room Type	Size	Inventory
Midnight Petite	26m²	2
Midnight Classic	29-30m²	109
Midnight Lounge	32-33m²	72
Midnight Junior Suite	48m²	6
Midnight Accessible	48m²	9
Lume Suite	80m²	1





The Unknown Artist
1960s
Oil on canvas
100 x 100 cm (39 3/8 x 39 3/8 in.)





Drink & Dine

Offering the ultimate food and beverage experiences, morning, midday and midnight.

Spoilt for choice, guests at Midnight Hotel will delight in fresh, local produce across seasonal menus, presented in a chic setting. Enjoy breakfast hosted in the light-filled, sun-bathed space of Braddon Merchant, where local produce is presented across a simple, honest menu. Unwind at Midnight Bar; warm and inviting, it offers the perfect night cap in a plush, trendy setting.





Braddon Merchant

Positioned in the heart of Braddon, and connected to the Midnight precinct, Braddon Merchant is sophisticated in presentation, smart in service and authentic in dining experience. Boasting a selection of modern Australian dishes designed to share, Braddon Merchant prides itself on championing seasonal produce and local suppliers.



Midnight Bar

Midnight Bar presents a vibrant, welcoming space for locals and visitors of the Midnight precinct. Inspired by the seasons, Midnight Bar exudes warmth through contemporary design and textural finishes, providing enjoyability year-round.

Led by curiosity and quality, Midnight Bar offers an evolving list of cocktails, wines and beers, complemented by a dynamic menu of simple food, done exceptionally well.

Positioned in the heart of Canberra, in the cultural hub of Braddon and connected to Midnight Hotel, Midnight Bar is the perfect backdrop for your next night out.





Meetings & Events

Stylish, convenient and connected.

Designed by acclaimed architects Fender Katsalidis, Midnight Hotel offers the ultimate conference and event experience. Unique spatial design, smart audio-visual technology and innovative event inclusions ensure your event is always a success.

Located on the mezzanine level, all conference and event spaces feature floor to ceiling windows, affording ample natural light and views to the surrounding neighbourhood.

Each space has been thoughtfully curated to showcase a unique selection of artworks, presented in proud partnership with the National Portrait Gallery, bringing culture, creativity, and storytelling into every corner.

Intimate, private boardrooms nest aside a smartly appointed business centre. Natural light fills the main conference room, complete with premium furnishings and state of the art AV.

Dedicated event professionals provide premium service from the moment your first guest arrives, ensuring that all elements of the event are catered for.

Conference and event attendees will also have access to a casual breakout space, which features a guest kitchen and relaxed seating.





Room	Layout Capacities						
	Boardroom	Theatre	Classroom	Cabaret	Cocktail	Banquet	U-Shape
Dawn Room 37m ²	20						
Noon Room 23m ²	8						
Autograph Lounge 29m ²	20	30					
Twilight Room 123m ²	30	90	30	55	80	70	30
The Atrium 200m ²					80		
Midnight Bar 226m ²					250		
Braddon Merchant 225m ²						70	

Twilight Room

Bathed in natural light, with views across south Canberra, Twilight Room offers guests the perfect setting to host daytime or evening events. A completely customisable event space, it boasts built-in audio-visual equipment, high speed WiFi, and sheer and black out curtains. Catering for intimate VIP events, to larger functions, Twilight Room is a private and professional space perfectly located in the heart of Braddon.

Dawn Room

Perfect for larger boardroom style meetings hosting up to 20 people, Dawn Room features built-in audio-visual equipment, high speed WiFi, and seamless tech connectivity. Clients and their guests will enjoy natural light, personalised event catering and access to a casual breakout space.

Noon Room

Designed for more intimate meetings of up to 8 people, Noon Room features built-in audio-visual equipment, high speed WiFi, and seamless tech connectivity. Clients and their guests will enjoy natural light, personalised event catering and access to a casual breakout space.

Autograph Lounge

Ideal for hosting events, workshops or presentations, Autograph Lounge is a spacious and sophisticated venue for 20–30 guests. The room features built-in audio-visual equipment, high speed WiFi, and seamless tech connectivity. Clients and their guests will enjoy natural light, personalised event catering, and access to a casual breakout space.

Midnight Bar

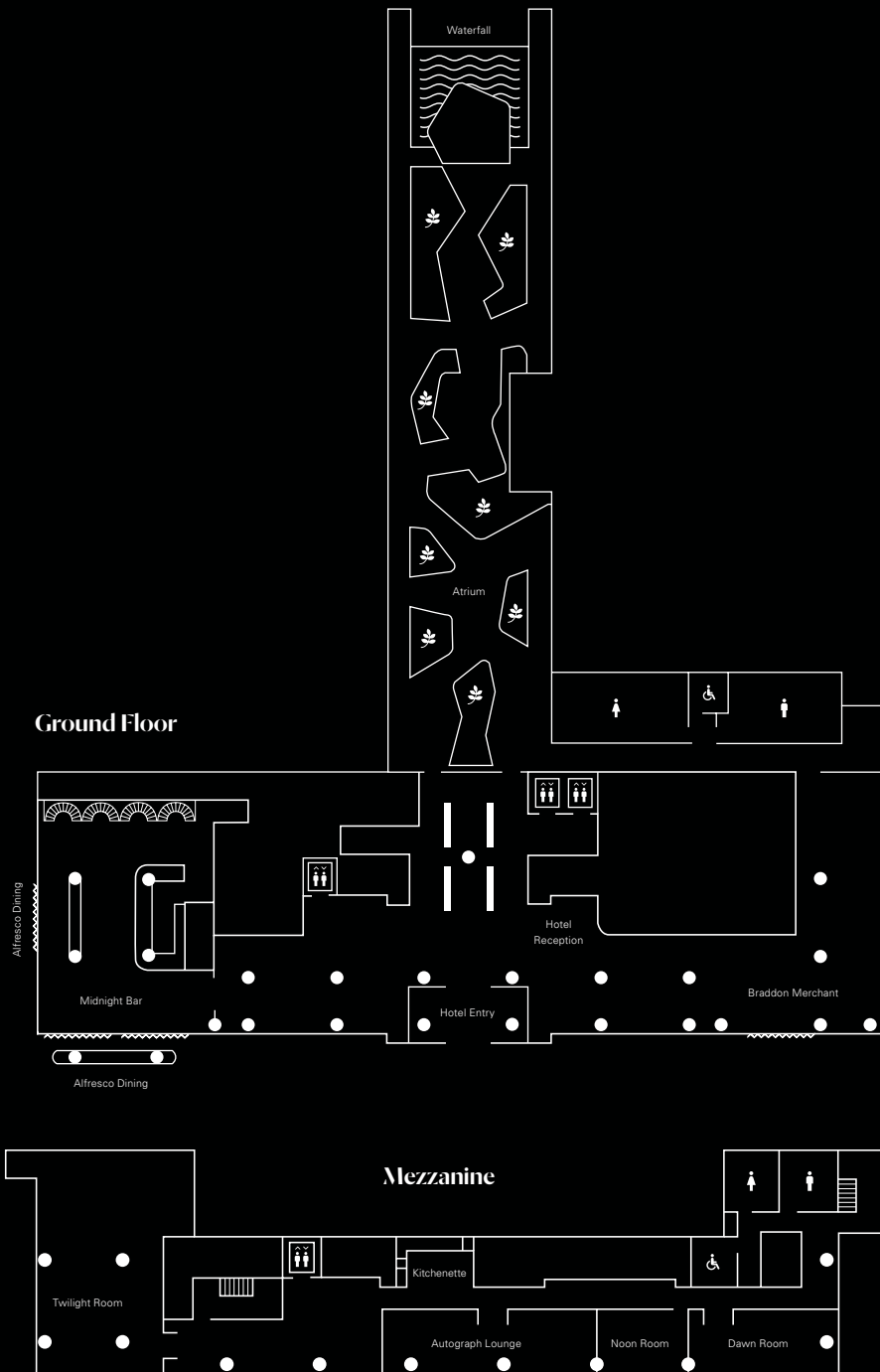
The ultimate inner-city venue, Midnight Bar offers a stylish backdrop for special evening events. Catering for up to 250 guests, Midnight Bar’s contemporary setting captures the warm afternoon sun, and features a modern alfresco lounge area, complete with fire pits for year-round comfort and ambiance.

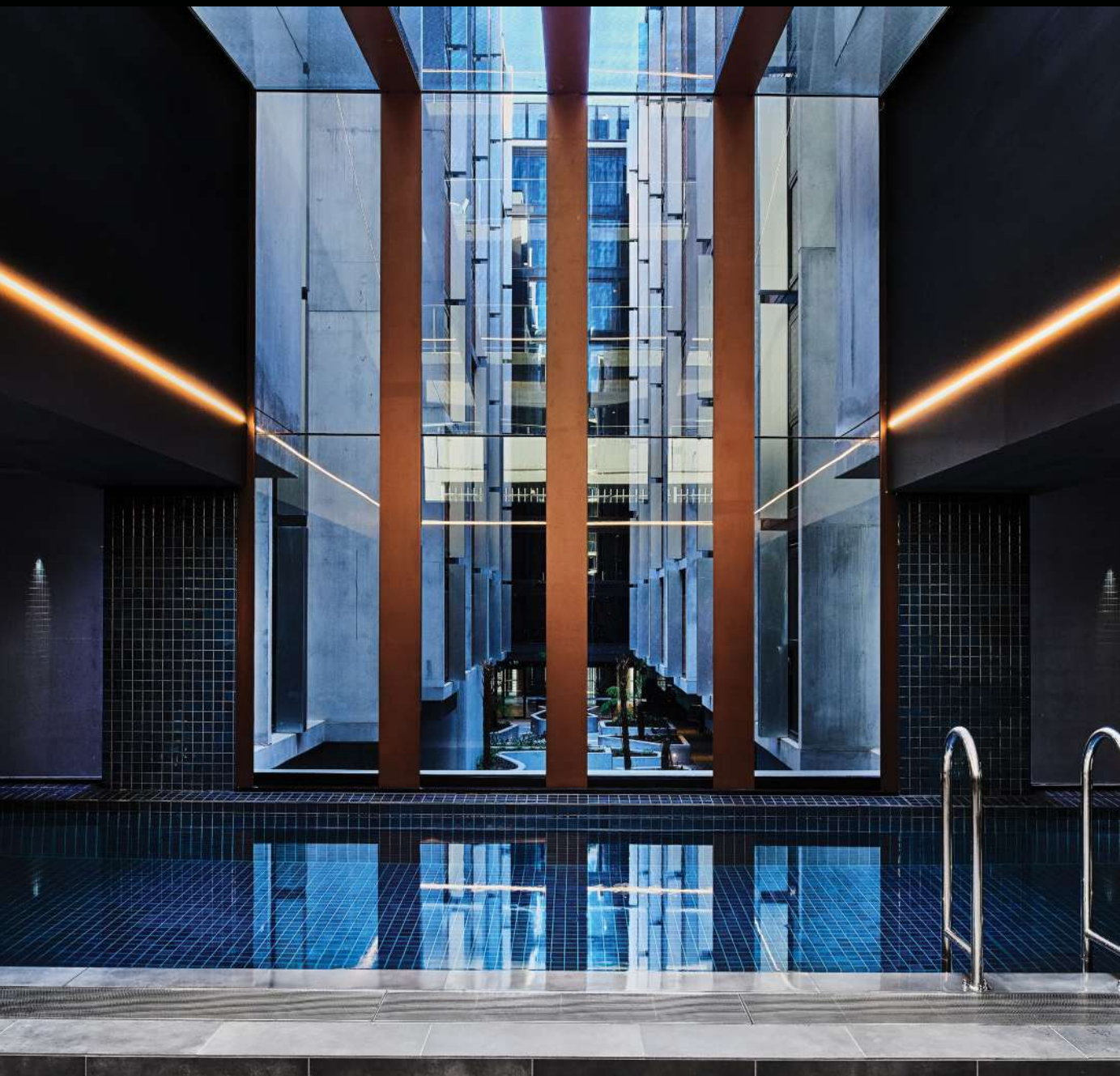
Braddon Merchant

Set within the vibrant Midnight Precinct, Braddon Merchant offers a warm, modern space ideal for banquet-style events of up to 70 guests. Known for its seasonal menus and refined dining atmosphere, it’s the perfect venue for corporate dinners, celebrations or networking events that call for a touch of style in the heart of Braddon.

The Atrium

The perfect synthesis of private and public space, the Atrium offers an inner-city oasis in the heart of Midnight Hotel. Lush landscaped gardens with nested seating, designed by acclaimed urban landscape design team, Oculus, provide a unique setting for events with a difference. Framed by an impressive cascading waterfall, the open-air Atrium can host up to 80 guests.





Wellness

Helping to create a healthier you.

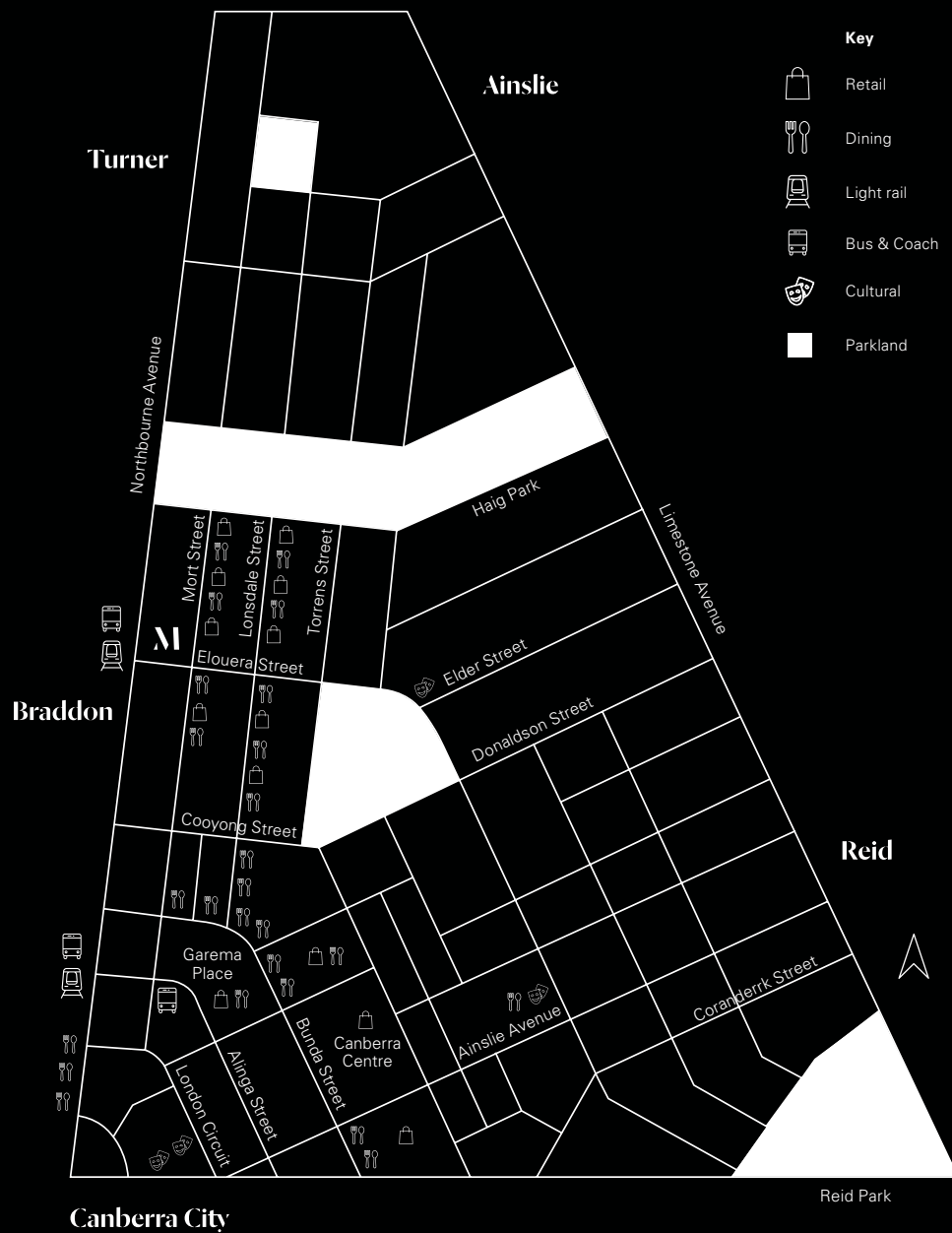
Midnight Hotel guests have access to a complete wellness centre, featuring a 20m lap pool, two fully equipped gyms, a sauna and pool deck with private cabana seating.

Creating positive exercise and health spaces, Midnight Hotel guests have the option to work out in the privacy of an exclusive, hotel guest-only state of the art gym or access the wellness facilities shared with precinct residents.

Just like having a dedicated gym buddy, Midnight Hotel guests will never feel alone in their pursuit for health, fitness and wellbeing when travelling.







Neighbourhood

Premium product in a premium locale.

The perfect mix of work and play, Midnight Hotel is located in Canberra's newest emerging neighbourhood, Braddon. A reflection of its locality, Braddon champions the city's history, culture and future.

To the East of Midnight Hotel is Lonsdale Street, a melting pot of design, culture, food and fashion. To the West, the Elouera Street Capital Metro Light Rail stop connects corporate and leisure commuters to key locations in Canberra.

Midnight Hotel allows guests to immerse themselves in as much or as little of the neighbourhood as they wish. The invitation is always open for the urban explorer, who seeks defining and authentic Canberra experiences.

- 5-minute walk to Canberra Centre
- 15-minute walk to National Convention Centre Canberra
- 10-minute drive to Parliament House
- 15-minute drive to Canberra International Airport

Partnerships

Hand-picked and highly curated.

Radiating an independent edge, both confident and progressive, Midnight Hotel's partnerships are worth talking about. Strategically and creatively aligned, Midnight Hotel brand partnerships speak personally and directly to each guest.

Timeless, on trend and provocative, promotional partnerships at Midnight Hotel embody the lifestyle philosophy of the Midnight brand; always complementing, enhancing and maximising brand and guest experience.

Marriott



CHAMPAGNE
TAITTINGER
Reims

HUNTER LAB

f. g. g.

FK
FENDER KATSALIDIS

NATIONAL
POTRAIT
GALLERY

VITTORIA
FOOD & BEVERAGE

EST. 2013
HUTWOODS
SYDNEY

BentSpoke
BREWING CO.

Loyalty

Rewards reimaged with Marriott Bonvoy.

We want guests to have every opportunity to enhance their travel experience. This is why Midnight Hotel and the Autograph Collection is a proud member of Marriott Bonvoy. Experience world-class benefits from Marriott International's leading loyalty program at Midnight Hotel, or at any of the thousands of handpicked boutique hotels and food and beverage venues across the globe.

Visit marriott.com to join the loyalty program, and download the app.

» DOWNLOAD NOW
MARRIOTT BONVOY



rothbourne

Midnight

Midnight Hotel, Autograph Collection

(02) 6220 0000

hello@midnighthotel.com.au

midnighthotel.com.au

1 Elouera Street, Braddon ACT 2612

PO Box 4519, Kingston ACT 2604

Discover More With

MARRIOTT BONVOY™

OVER 30 HOTEL BRANDS. 10,000 GLOBAL DESTINATIONS.